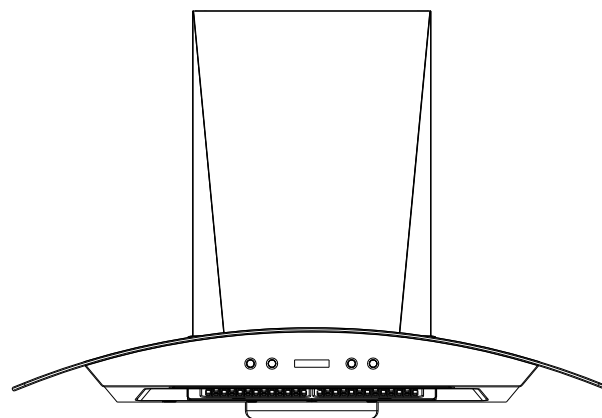




METROPOLIS COLLECTION

INSTRUCTION MANUAL



◆PLEASE READ THE MANUAL CAREFULLY BEFORE OPERATION.◆

■ TABLE OF CONTENTS

※	Warning.....	P1-2
1.	Installation Instruction.....	P3
2.	Operation of Switch.....	P4-5
3.	Dismantling, Cleaning and Re-installation.....	P6-9
4.	Main Parts.....	P10
5.	Cleaning Maintenance.....	P11
6.	Trouble Shooting.....	P12
7.	Safety Notes.....	P13
8.	Specification.....	P14
9.	Circuit Assembly Drawing.....	P14
10.	One Touch Automatic Cleaning Programme.....	P15-16
11.	Body Size.....	P17

WARNING

Disconnect the electric power before repairing, replacing or cleaning to this appliance.

For general ventilating use only. Do not use to exhaust hazardous or explosive materials and vapors.

Sufficient air is needed for proper combustion and exhausting of grease through the flue (chimney) of fuel burning equipment to prevent back drafting.

Do not light up fire under the cooker hood. Never place a switch where it can be reached from a tub or shower.

Must utilize reliably grounded socket of power source

If the supply cord is damaged, it must only be replaced by an authorized person or qualified electrician.

There is a fire risk if cleaning is not carried out in accordance with the instructions.

To prevent fire risk, cleansing smoke ventilator by using flammable and volatile dissolvent is forbidden, such as alcohol, banana oil or gasoline and so on. What is more, wear rubber gloves to prevent mental wound, and disconnected parts should be treated gently to prevent distortion

WARNING

The minimum distance between the cooker hob surface and the lowest part of the cooker hood is 650mm~700mm if the cooker hood is installed over a gas cooker.

Be careful while you are cleaning the hood, making sure that the motor and the electrical parts are forbidden to contact with the water. Do not distort the parts or remove the bob-weight to avoid causing shake and louder noise thereby..

Disconnect the electric power if do not use the cooker hood for a long time

Never leave surface units unattended at high settings. Bouovers cause smoking and greasy spillovers that may ignite, heat oils slowly on low or medium settings.

This appliance is not intended for use by young children, or infirm persons without supervision.

1. Installation Instruction

- ◆ Installation must be carried out by an authorized/qualified technician.
- ◆ Before installation, plug in and check if all switches are functional.

Environment:

1. For efficient air extraction, avoid opening too many windows surrounding cooker hood for it will cause air convection which prevents cooking fume going up to the cooker hood effectively.

Installation Height:

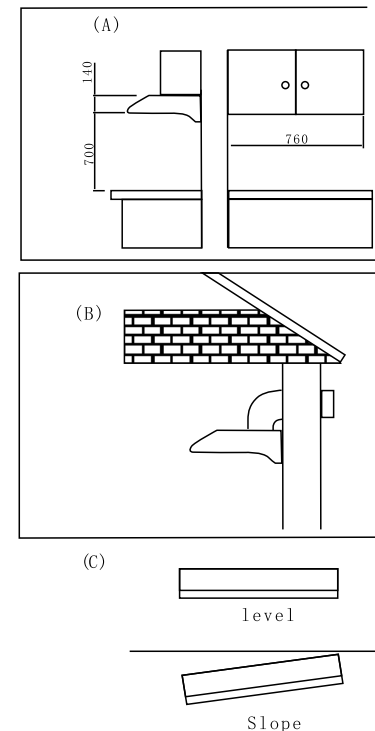
2. The distance between the hob and the lower part of the hood must be at least 650mm ~ 700mm. **Fig(A)**

Exhaust duct length:

3. The length of the exhaust duct should be minimized to avoid air turbulence inside the duct. **Fig(B)**

Balance level:

4. The installation of the hood should remain level to avoid oil spill-over from oil collectors. **Fig(C)**

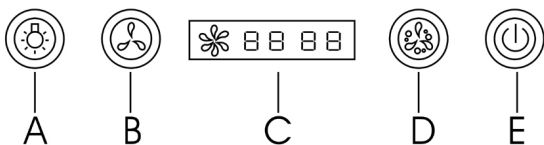








Note: All the installation or maintenance must be done by qualified technician in accordance with all the instructions specified in this booklet. The importer or the manufacturer would not be held any responsibility for any damage or injury caused due to mis-use or mis-handling of the hood.

2. Operation of switch


When cooking, please turn on the range hood. After cooking, leave the fan on for an additional 1-2 minutes to vent the remain lampblack.

- A. light
- B. speed
- C. displayer
- D. auto clean button
- E. off

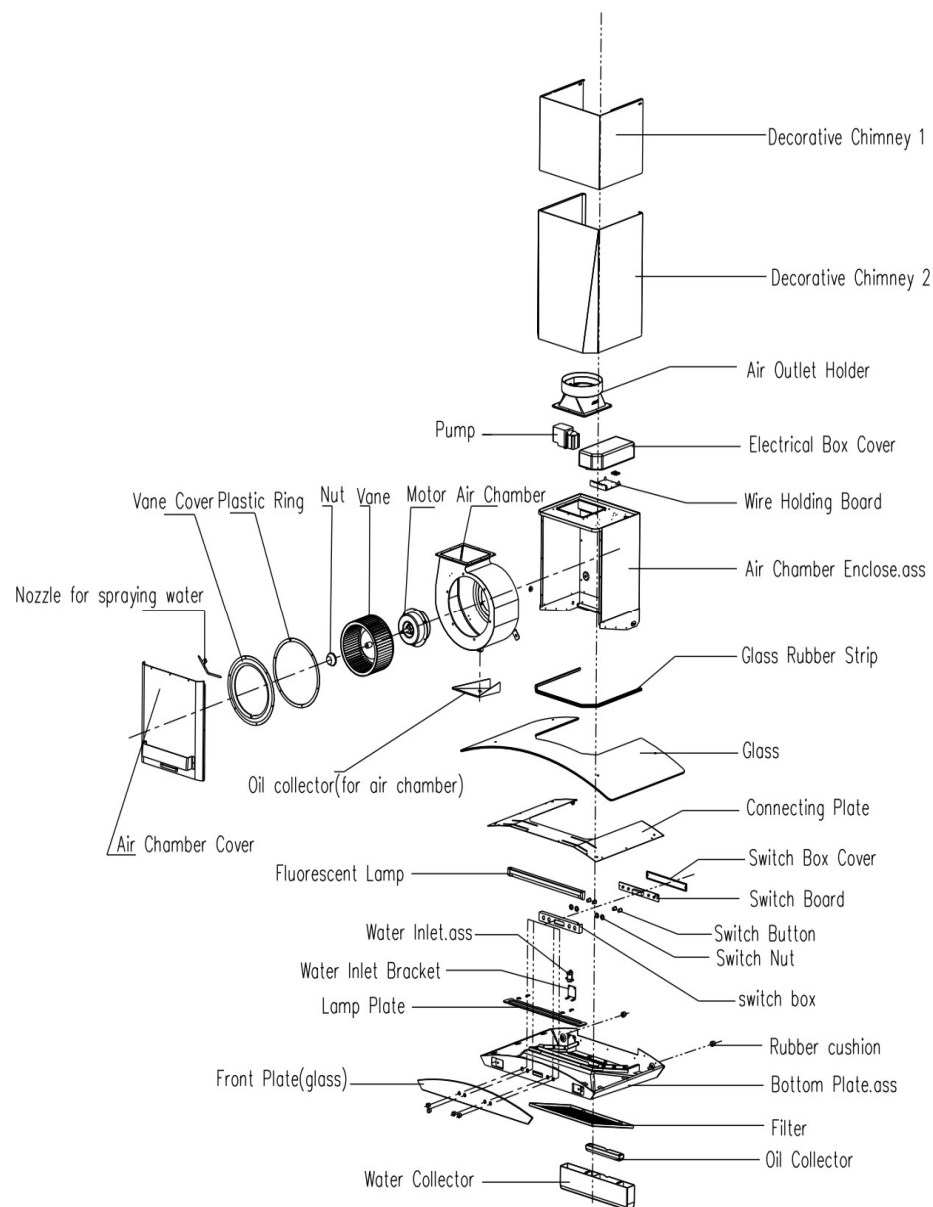


1. Before using, connect the plug to the socket with earth connecting.
2. After plugged, you will hear 1 beep, and indicator light and displayer will be lighted for 1 second.
3. Press , the light is on. Then press it again, the light is off.
4. Press , the motor speed is at low, the motor indicator is on, displayer indicates "1". Then press  again, the motor speed is at middle, the motor indicator is on, displayer indicates "2". Press  third time, the motor speed is at high, the motor indicator is on, displayer indicates "3". Press  four time, the motor speed is stopped, there is no indicator on the displayer.
5. Press  for one second, the auto clean function is on. Other

function is locked except the light. Auto clean light, and motor indicator is on. The displayer indicates "3". Auto clean starts, and lasts for 84 seconds. And then stops. The motor will last for 3 seconds, and then stops. Auto clean and motor indicators are off. And the light will keep the same as before. If you want to stop the clean function midway, you can just to press the button again.

6. When the motor or light is on, press , the timer indicator is on, the displayer indicate "3" minutes delaying to stop the hoods. Each press, it will add "3" minutes, like "3-6-9-none-3-6-9". If without pressing in 3 seconds, the hood confirms the time automatically, the timer indicates "-" on the displayer and start the close automatically. When count down, all is stand by, and will hear 1 beep. And the machine will recover to stand by status. When in the status of delay shutting hood function, press this button again to close all the function to be in stand by status. In the timer function, press other button, it will cancel the delay function. In the stand by status, by pressing the button is useless.

Dismantling & Re-installing Chart



3. Dismantling, Cleaning and Re-installing

■ NOTE

1. Whenever dismantling, re-installing or cleaning the cooker hood, please always unplug the power plug.
2. When dismantling, re-stalling or cleaning, please always wear latex or rubber gloves for safety.
3. Never spill or spray water to motors directly.
4. Any wires or power cord damaged, please contact manufacturer, service agent or qualified technicians for repairing. DO NOT repair the cooker hood by yourself.
5. Before dismantling, cleaning and re-installing, please know well about name, quantity and location of dismantled parts to avoid of shortage and mis-installation.

Dismantling

1. First, take off the plug.
2. Take off the screw on the glass, and take out the glass.
3. Take off the screws on the decorative chimney, and take off decorative chimney 1 and 2.
4. Take off Air chamber cover, and take off screws on spray.
5. Clockwise direction to loosen vane cap screw and take out the vane.

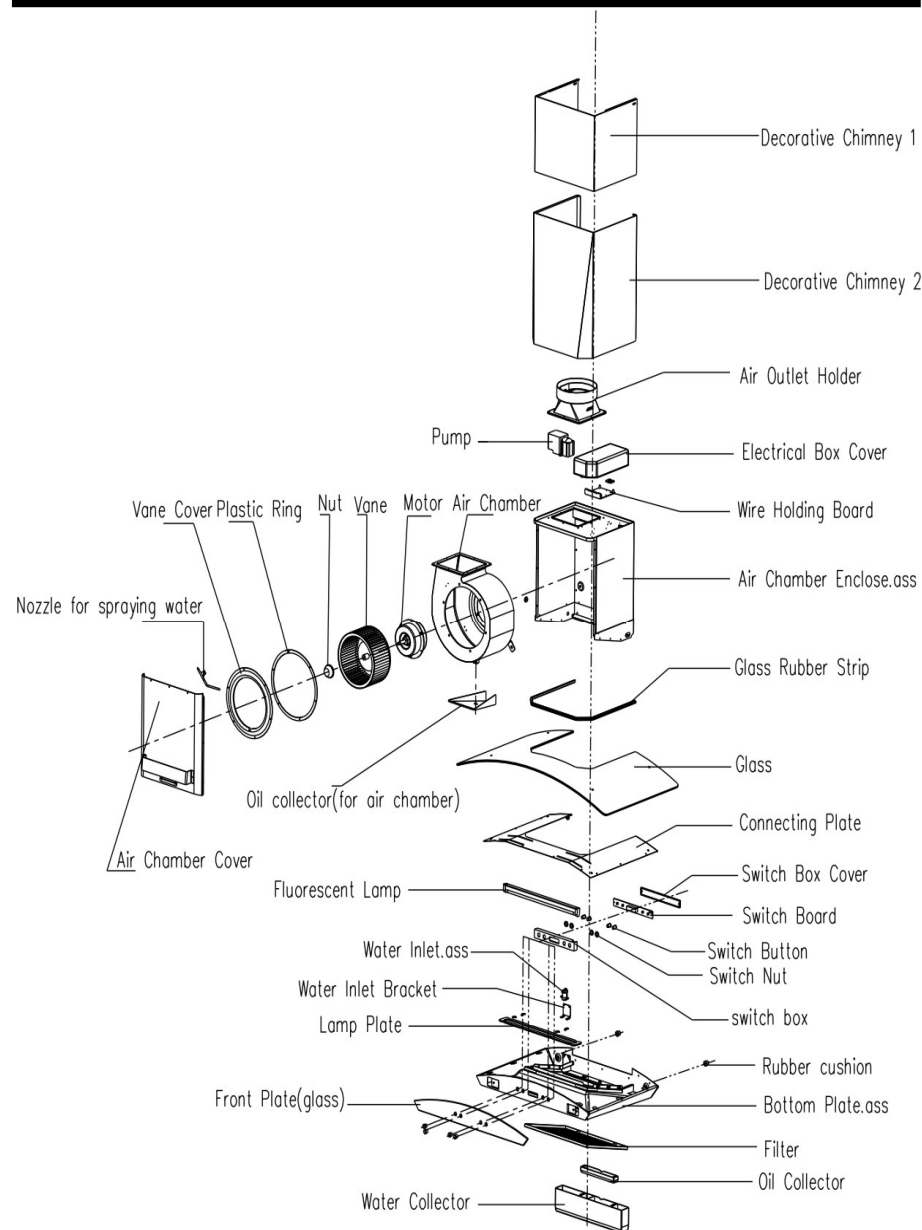
Cleaning

To immerse all the dismantled parts in neutral detergent water for 30 minutes then wash by nylon brush and dry those parts before re-installing.

Reinstalling

1. When reinstalling vane, the vane must be locked on to the pin of motors.
2. Anti-clockwise direction to fasten vane cap screw.
3. Screw the spray on, screw the air chamber cover on, screw decorative chimney 1 and 2 on, fasten the glass on.

4. Main Parts



5. Cleaning maintenance

Always disconnect the power before cleaning.

1. Use neutral detergent to clean surface of the hood each time after use
2. Clean both exterior and interior of the hood at regular intervals can keep the hood more long lasting. Do not use abrasive cleanser.
3. Filter can be detached for cleaning by removing the screws with a screwdriver. It must be reinstalled after clean.
4. The oil cup in the center of the hood for holding grease can be detached and cleaned regularly.
5. Make a habit to turn on the hood before stove to avoid high heat in the kitchen.
6. Clean oil collectors when they are more than half filled with oil to avoid spill-over.

6. Trouble shooting

Status	Method of fixing
Bulb does not light	<ol style="list-style-type: none">1. Check for blow bulb2. Check for damaged switch
Motor does not work	<ol style="list-style-type: none">1. Check connection of power plug2. Check whether the vane is blocked3. Lubricate the motor4. Repair or replace damaged switch5. Replace the capacitor6. Replace the motor
Machine vibrates when switch on	<ol style="list-style-type: none">1. Fasten the body2. Check for damaged vanes3. Check if the vanes are installed well4. Fasten the motor
Big noise	<ol style="list-style-type: none">1. Regulate bob-weight or replace the vanes2. Check whether some matters drop into the air chamber.
Weak suction	<ol style="list-style-type: none">1. Lower the hood properly2. Do not open too many windows for improving the suction environment3. Downwards the duct ora4. Replace the motor and the capacitor
Oil leakage	<ol style="list-style-type: none">1. Remain the body level2. Replace the sealant
Unworkable cleaning	<ol style="list-style-type: none">1. Replace the cleaning bump2. Replace the control machine

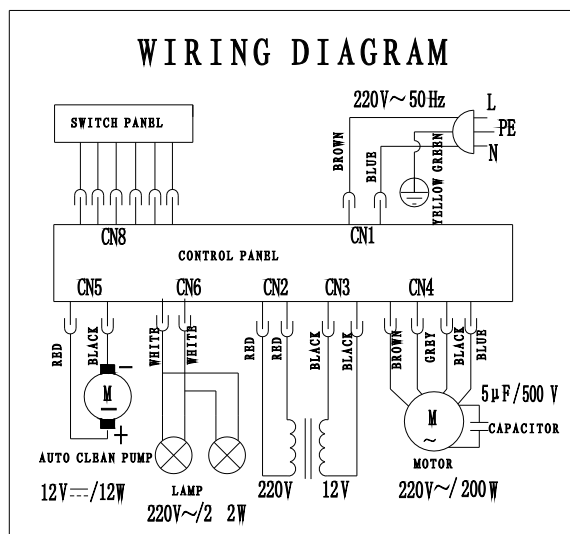
7. Safety Notes

1. This product must be grounded. If you are unfamiliar with methods of installing electrical wiring, secure the services of a qualified electrician.
2. Turn off power before dismantling, re-installing and cleaning.
3. The exhaust duct must be exposed outdoors. Do not exhaust air into spaces within walls or ceilings or into attics, crawl spaces or garages.
4. The air must be well aerated in case hood and some other heat equipment fed with an energy other than electricity (gas, oil, coal heaters, etc.) operated at the same time.
5. The air collected must not be conveyed into a duct used to blow off smokes from appliances fed with an energy other than electricity (central heating systems, thermosiphons, water-heaters, etc.).
6. When frying, take particular care to prevent oil and grease from catching fire. Already used oil is especially dangerous in this respect.
7. To avoid possible risks of fire always comply with the instructions when carrying out any cleaning or servicing operations on the appliance.

8. Specifications

Voltage	220V AC / 50Hz
Power consumption	212W
Illumination	1X12W
Outlet diameter	160mm
Noise level	56dba
Suction power	1100m3/hr
Rotating method	Single motor
Technology	Oil collector with Auto clean
Body Size	895X500X590mm

9. Circuit Assembly Drawing Cooker Hood

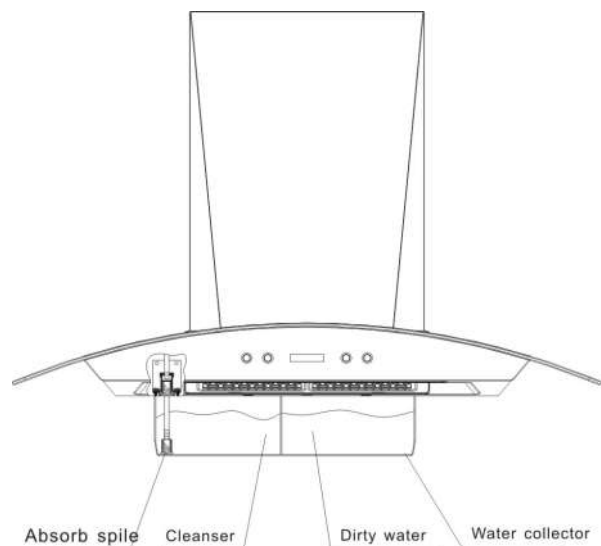


10. One Touch Automatic Cleaning Programme

Functions: The cooker hood shall be cleaned by using the special cooker hood cleaner available in the market. After the cleaner is mixed with water (ratio 5: 200), the cleaner mixture shall be poured into the left side of water collector. The cleaning process works on the centrifugal force and cleaning power generated by revolving the motors at high speed, it keeps the inside of the cooker hood clean and prolongs the life of the cooker hood.

Operating Instructions:

1. Mix the cleaner and water by pouring water and the cleaner 550~650ml to the left side of water collector. (cleaner : water = 5 : 200)
2. Take off the oil collector, and press the absorb spile slightly. Pull out the water pipe about 80mm.
3. Hand up the water collector to the hood.
Notes: (1). Don't pull out the water pipe strongly. In case to doff it.
(2). The right side of water collector should be empty.
4. Press the " Auto Clean" button to start the motors and the cleaner will be discharged automatically and cleans the inside of the cooker hood.
5. The oil retainer shall be taken out to remove the dirty oil once the dirty oil reaches the marked line to prevent spillage.



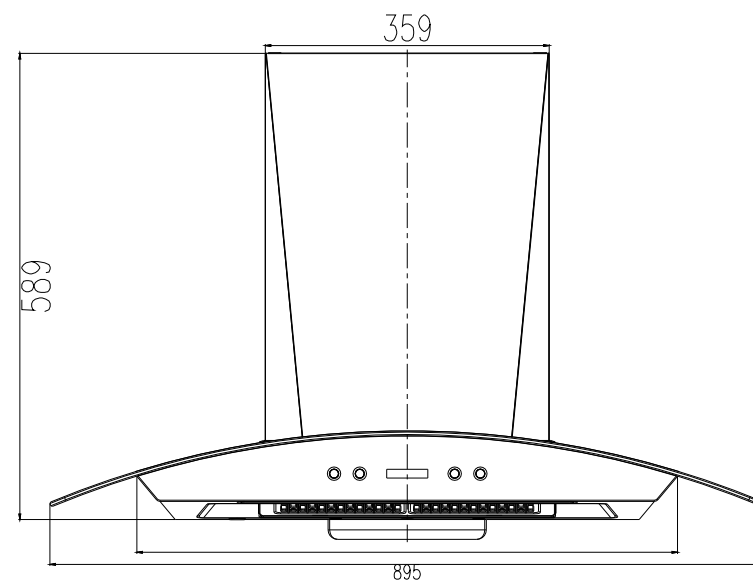
10. One Touch Automatic Cleaning Programme

Precautions

1. Only special cooker hood cleaner available in the market shall be used.
2. Follow the water and cleaner mixture ratio (ratio 5:200).
3. Consumers are advised to clean the cooker hood once a day. It may be cleaned less frequently according to individual needs.
4. When filling the cooker hood with the cleaner mixture, use only the special water collector provided with the cooker hood and take precautions not to overfill the cleaner storage unit.

5. Check the oil retainer during the cleaning process to prevent oil spillage. Do not allow dirty oil to exceed the water collector.
6. Do not put any other substances into the cleaner compartment unit as this will cause blockage of its injection hole.
7. The cleaner storage unit and the water collector are of identical size. The cleaner mixture stored can be used for 5 to 6 times. The cleaner storage unit may be refilled by diluted cleaner mixture every time after use. To prevent overfilling, excess cleaner mixture will be discharged into the oil retainer automatically.

11. Body Size



unit: mm